

Data Sheet

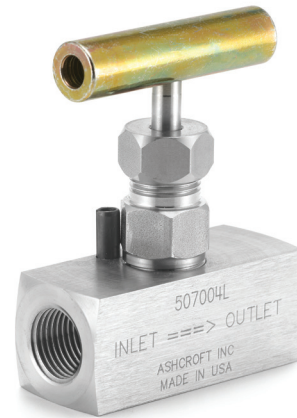
7001L, 7004L Steel Needle Valves

FEATURES

- Adjustable throttling device
- Varying the orifice to determine the exact orifice for any specific service condition

TYPICAL USES

- Oil and gas
- Refineries
- Chemical and petrochemical
- Water and wastewater



7004L
Needle Valve

SPECIFICATIONS

Models:	7001L
Process/Instrument Connection:	¼ NPT Female
Material:	Carbon steel or 316 Stainless steel

PRESSURE RATINGS

Model	Material	100 °F	550 °F	850 °F	1,000°F
25-7001L	Carbon steel with 12-14% chrome	10,000 psi	7,735 psi		
50-7001L	SS stem				
25-7004L	316 SS	7,000 psi	4,500 psi	3,895 psi	3,535 psi
50-7004L					

KEY BENEFITS

- Protects instruments against surges and pulsations
- Provides reliable and repeatable performance.

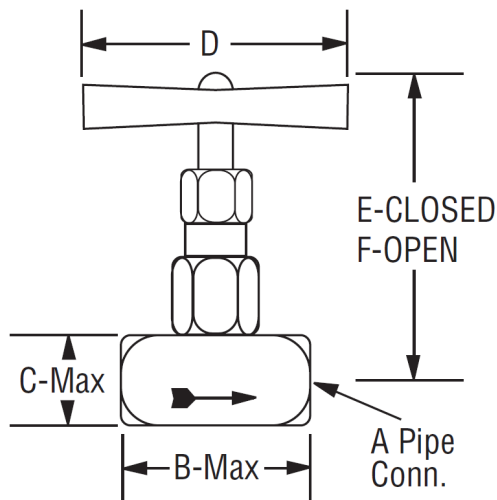
Data Sheet

7001L, 7004L Steel Needle Valves

ORDERING CODE	Example:	25	7004L
Process/Instrument Connection			
25 - ¼ NPT Female		25	
50 - ½ NPT Female			
Model			
7001L			
7004L			7004L

DIMENSIONS in [] are millimeters

For reference only, consult Ashcroft for specific dimensional drawings



A	B	C	D - min.	E	F	Weight (oz.)
¼ NPT	2½	7/8	2½	3	3⅛	8
½ NPT	2¼	1¼	2½	3⅛	3⅛	21